



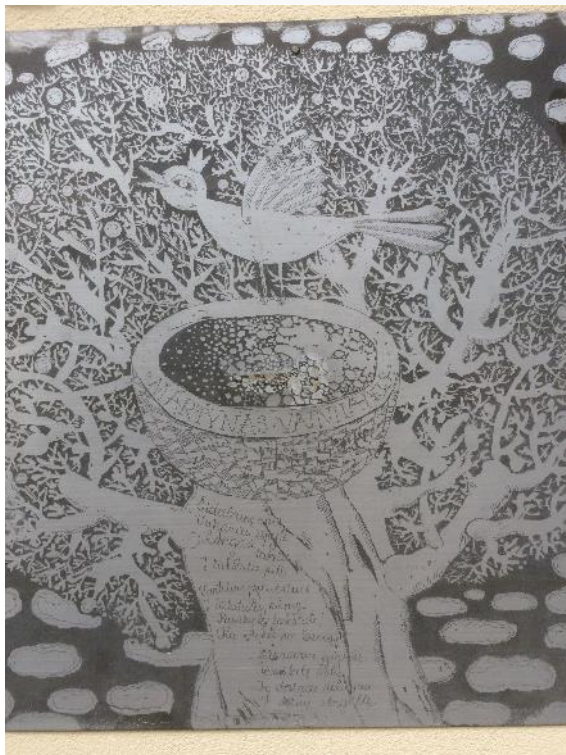
UGDYMO PLĖTOTĖS CENTRAS

**Paveikslų ir iliustracijų tvarkymas su
atvira *IrfanView* programa**

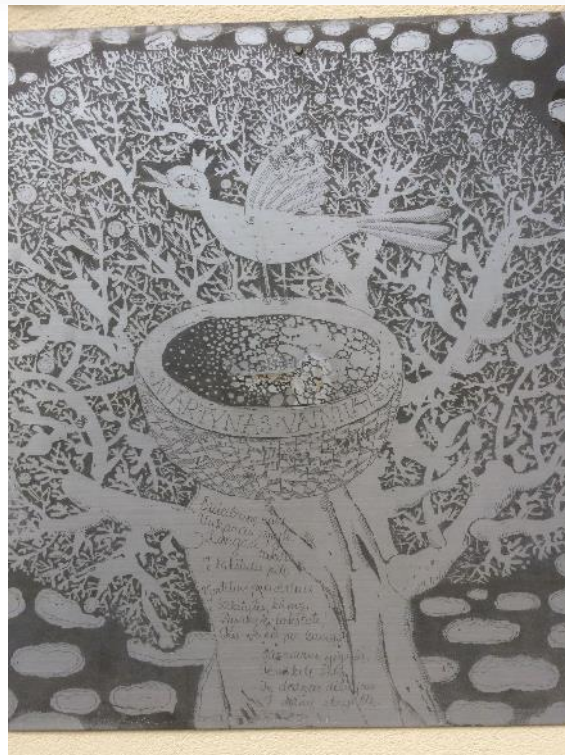
Alvida Lozdiene
alvida.lozdiene@upc.smm.lt

2019-04-23

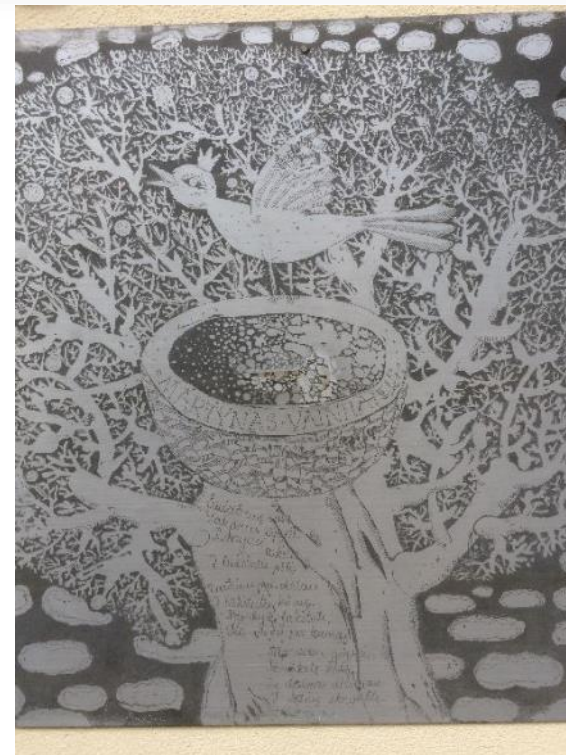
Metodinės medžiagos rengimas



1,3 MB

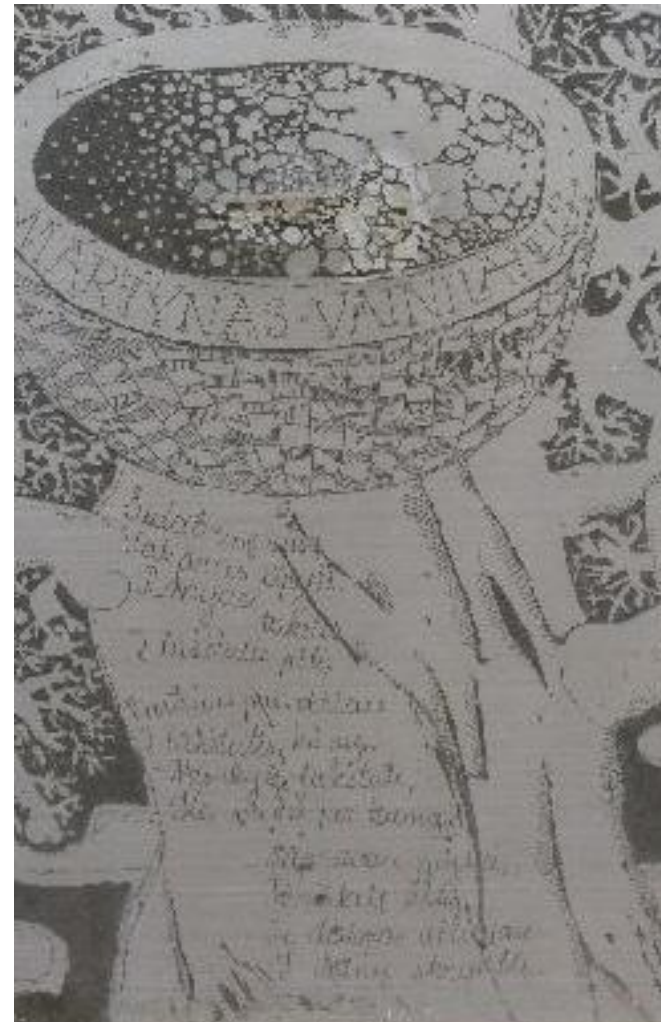


726 KB



122 KB

Paveikslo raiška



Metodinēs medžiagos rengimas



812 KB

65 KB

36 KB

Sužinokime

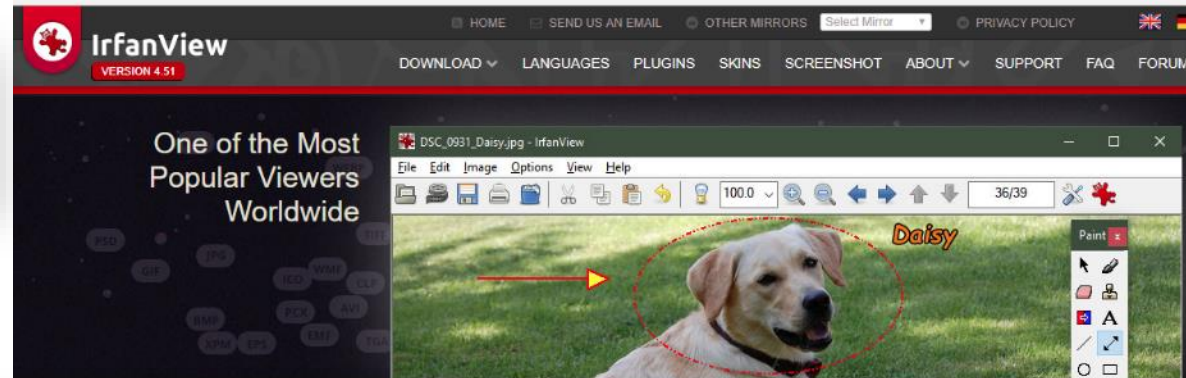
Tobulēkime

Veikime

Paveikslo raiška



Paveikslų tvarkymas



<https://www.irfanview.com/>

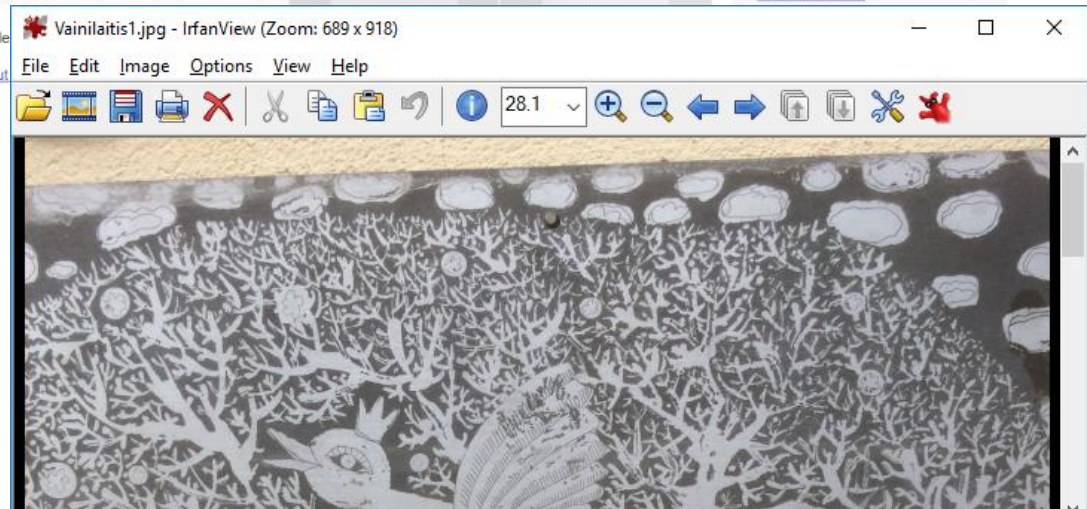
- Supports Windows XP, Vista, 7, 8, and 10
- 32 and 64 bit version
- Multi language support
- Unicode support
- Designed to be simple

[More informations about](#)

VERSION 4.51)
le in 32 and 64 bit.
Id 1 download?
See 64-bit info.

USEFUL PARTNER SITES

Stempel bestellen:
www.stempelservice.de
scams info:
www.scams.info



IMG_1916.JPG - IrfanView (Zoom: 1224 x 918)

File Edit Image Options View Help

37.5

3264 x 2448 x 24 BPP 202/237 38 % 2.59 MB / 22.86 MB 201

Sužinokime

Tobulėkime

Veikime



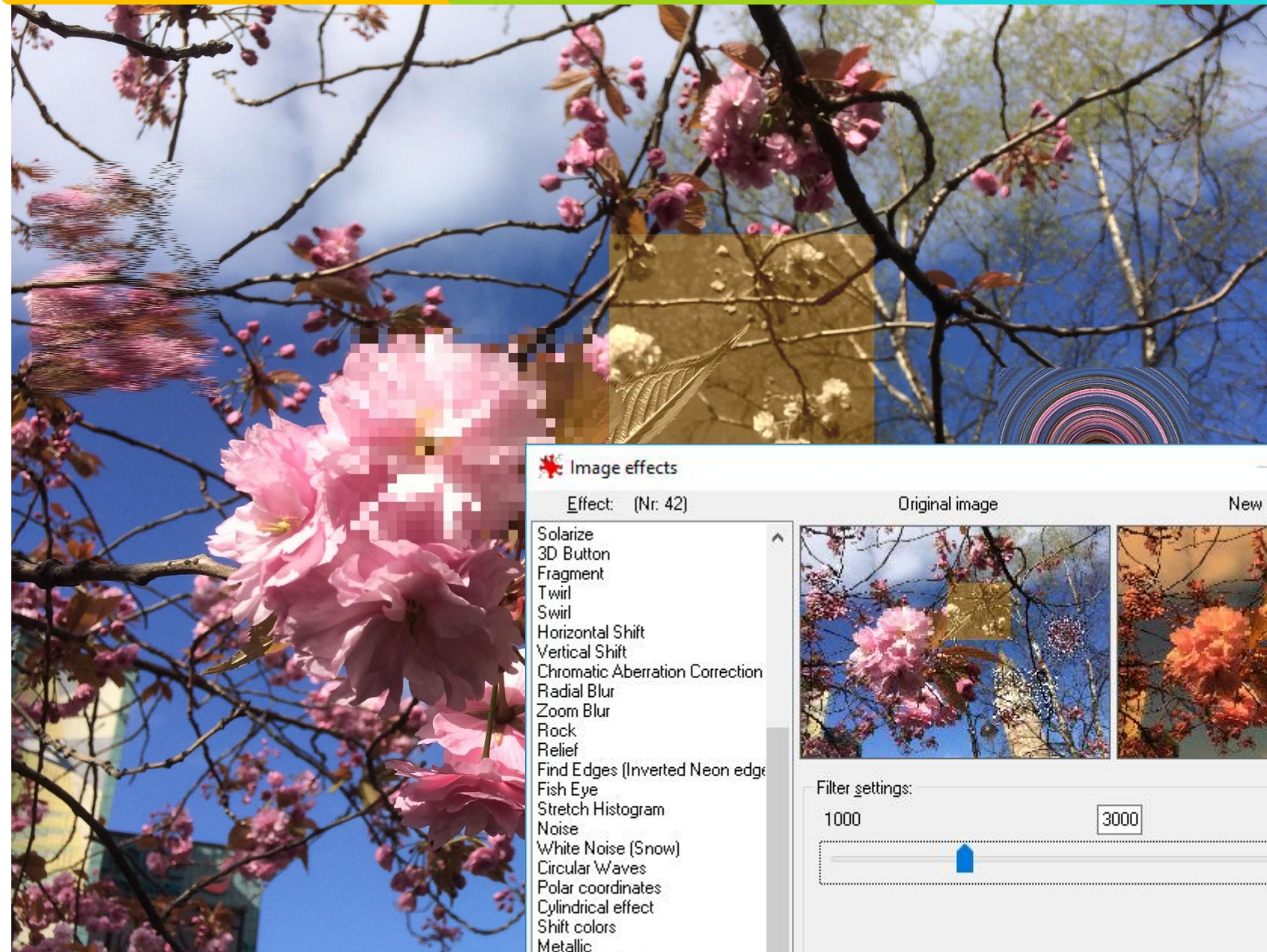


Image effects

Effect: (Nr. 42)

- Solarize
- 3D Button
- Fragment
- Twirl
- Swirl
- Horizontal Shift
- Vertical Shift
- Chromatic Aberration Correction
- Radial Blur
- Zoom Blur
- Rock
- Relief
- Find Edges (Inverted Neon edge)
- Fish Eye
- Stretch Histogram
- Noise
- White Noise (Snow)
- Circular Waves
- Polar coordinates
- Cylindrical effect
- Shift colors
- Metallic
- Metallic - Gold
- Metallic - Ice
- Color Temperature**

Original image New image

Filter settings:

1000 3000 10000

Apply to current image Undo OK Cancel

Ziedai6.jpg - IrfanView (Zoom: 1224 x 918)

File Edit Image Options View Help



Information... I

Create New (empty) image... Shift+N

Create Panorama image...

Rotate Left (counter-clockwise) L

Rotate Right (clockwise) R

Custom/Fine rotation... Ctrl+U

Vertical Flip V

Horizontal Flip H

Resize/Resample... Ctrl+R

Change canvas size... Shift+V

Add border/frame... Ctrl+D

Increase Color Depth...

Decrease Color Depth...

Convert to Grayscale Ctrl+G

Show channel >

Negative (invert image) >

Color corrections... Shift+G

Histogram... Shift+H

Replace Color...

Create Tiled images...

Auto-adjust colors Shift+U

Sharpen Shift+S

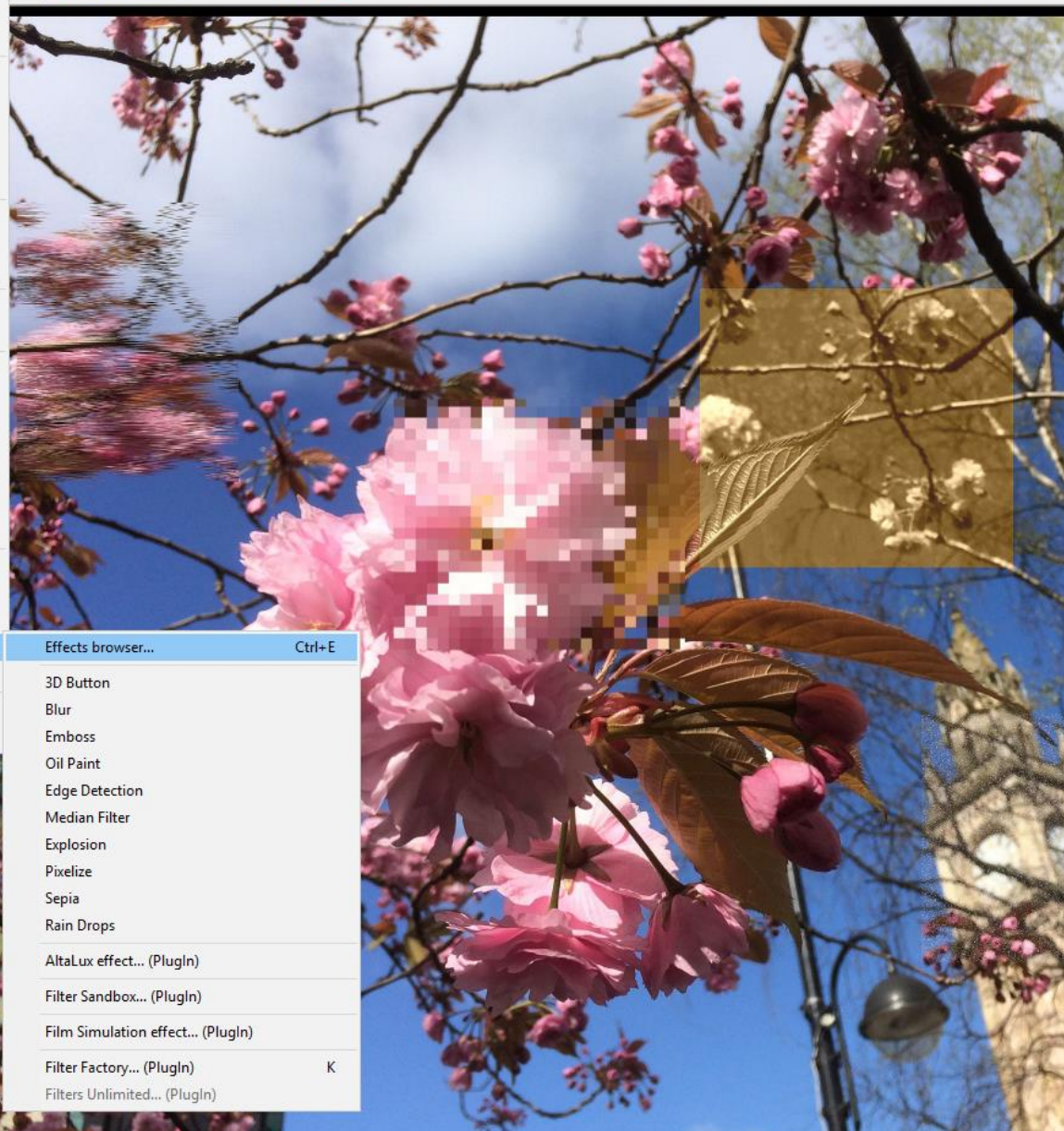
Red eye reduction (selection) Shift+Y

Effects >

Adobe 8BF PlugIns >

Swap Colors >

Palette >



Effects browser... Ctrl+E

3D Button

Blur

Emboss

Oil Paint

Edge Detection

Median Filter

Explosion

Pixelize

Sepia

Rain Drops

AltaLux effect... (Plugin)

Filter Sandbox... (Plugin)

Film Simulation effect... (Plugin)

Filter Factory... (Plugin) K

Filters Unlimited... (Plugin)



Užduotis

Atverkite nuorodą (mokymai.jimdo.com)

Paveikslų pavyzdžiai

Išsirinkite vieną nuotrauką, atsisųskite, atverkite šią nuotrauką su programa *IrfanView* ir paeksperimentuokite

